

HP01 HomePlug Ethernet Adaptor

Easy Start

Version 1.2

CONTENTS

1 Introduction to HP01 HomePlug Ethernet Adaptor.....	2
1.1 Package contents.....	2
1.2 Important Safety Instructions.....	3
2 Connection and Indicator Lights.....	4
3 Examples of Applications.....	5
3.1.1 Home Networking-option 1.....	5
3.1.2 Home Networking-option 2.....	5
3.1.3 Home Networking-option 3.....	6
3.1.4 Home Networking-option 4.....	6
3.2 Care Instructions.....	7
4 PLCCongig Installation.....	8
Running the InstallShield Wizard.....	8
5 Configuration.....	12
5.1 Diagnose a Local Powerline Device.....	12
5.2 Diagnose a Network Powerline device.....	13
5.3 Setting Up Security on a Local Powerline device.....	14
5.4 Setting Up power management on a Local Powerline device.....	15
6 Technical Data.....	17
7 Frequently Asked Questions.....	18

1 Introduction to HP01 HomePlug Ethernet Adaptor

One of the major drawbacks in setting up home network is the absence of required wiring inside the house to interconnect networked computers. In recent years several technologies have attempted to address the issue. The most prominent technology so far is the family of WIFI (802.11X) products. Recently, however, another technology called HomePlug has come forth. It uses electrical grids, already available inside walls to transmit data from computer to computer. HomePlug technology modulates computer data in a way to enable them use power grid as a medium of transmission from point to point. Using this technology, two computers have a virtual Ethernet connection without the need to be physically connected to each other.

The HP01 HomePlug Ethernet Adaptor has 3 indicator lights(LEDs) and Ethernet port. The LEDs depict the connection status, as well as other information, enabling detailed diagnosis of system malfunction. The Ethernet port is to connect to a device in the home network. The HP01 HomePlug Ethernet Adaptor has a standard power plug for connection to power outlet. There are four main kinds of power plugs:

- HP01-UK(UK)-3 pins UK plug with integrated 230V AC power supply.
- HP01-EU(EUR)-2 pins EU plug with integrated 230V AC power supply.
- HP01-US(US)-2 pins US plug with integrated 120V AC power supply.
- HP01-AU(AU)-3pins AU plug with integrated 230V AC power supply

Computer networking in the office or home has the following advantages:

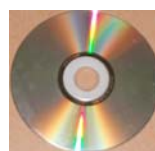
1. Share centrally stored data
2. Share one printer
3. Multi-access to one Internet connection
4. Multi-user games over network.

1.1 Package Contents

Make sure that you have the following items. If any of the items is damaged or missing, please contact your dealer immediately.



HP01-A2 HomePlug Ethernet Adaptor(Qty:2)



CD (Qty:1)



CAT-5 UTP Straight Ethernet Network cable(RJ-45)(Qty:2)

1.2 Important Safety Instructions

Please read these instructions carefully:

1. Unplug the HP01 HomePlug Ethernet Adaptor from the wall outlet before cleaning. Do not use liquid cleaners or aerosol cleaners. Use a damp cloth for cleaning.
2. Do not use the HP01 HomePlug Ethernet Adaptor near water.
3. The HP01 HomePlug Ethernet Adaptor should never be placed near or over a radiator or heat register, or in a built-in installation unless proper ventilation provided.
4. The HP01 HomePlug Ethernet Adaptor should be operated form the type of power indicated on the marking label. If you are not sure of the type of power available, consult your dealer or local power company.
5. The HP01 HomePlug Ethernet Adaptor relies on the building's electrical installation for short-circuit (over current) protection. Ensure that a fuse or circuit breaker no larger than 120 VAC or 230 VAC(depends on the power supply type in your country) is used on the phase conductors(all current-carrying conductors).
6. Plug the HP01HomePlug Ethernet Adaptor directly into a 100V AC ~ 240V AC(depends on the power supply type in your country) wall outlet. Do not use an extension cord between the adapter and the AC power source.
7. Do not attempt to service the HP01 HomePlug Ethernet adaptor yourself, as opening or removing covers may expose you to dangerous voltage points or other risks as well as ruin product warranty. Refer all servicing to qualified service personnel.
8. Unplug the HP01 HomePlug Ethernet Adaptor from the wall outlet and refer the product to qualified service personnel for the following conditions:
 - If liquid has been spilled into the product .
 - If the product has been exposed to rain or water.
 - If the product does not operate normally when the operating instructions are followed.
 - If the product exhibits a distinct change in performance.

2. Connection and Indicator Lights

The HP01 HomePlug Ethernet Adaptor has three lights indicator(LEDs) and an Ethernet port:



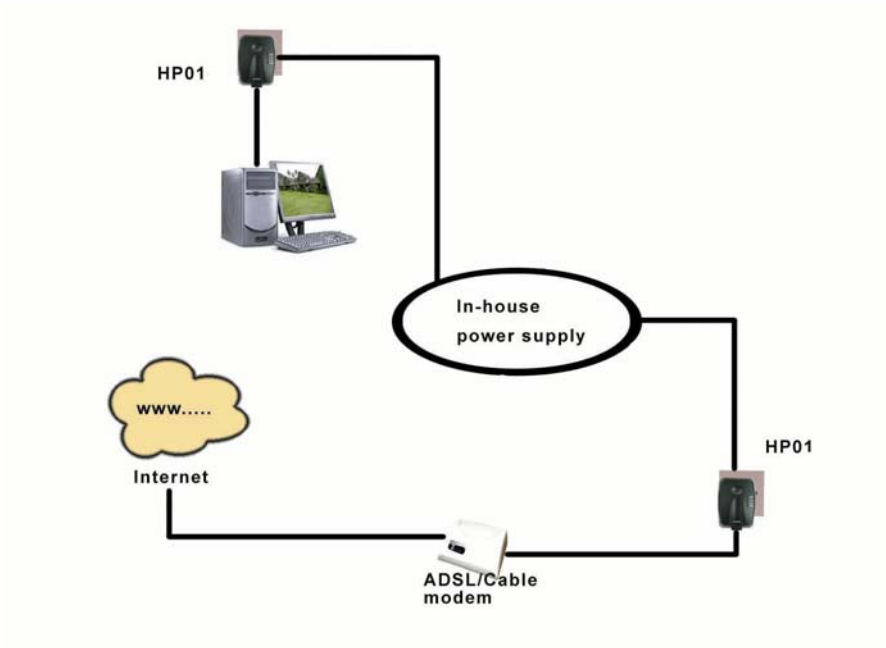
- PL-ACT: Flash when the powerline device is transmitting or receiving data.
- PL-LINK: Lights up powerline network is ready to use.
- 10/100MB: Red/Green Lights up when connector to the 10/100M Ethernet.
Flash when transmitting or receiving data.
- ETHERNET: This is the connection point for connecting it to a computer or other devices with Ethernet port.

3. Examples of Applications

This section demonstrates some of the application scenarios.

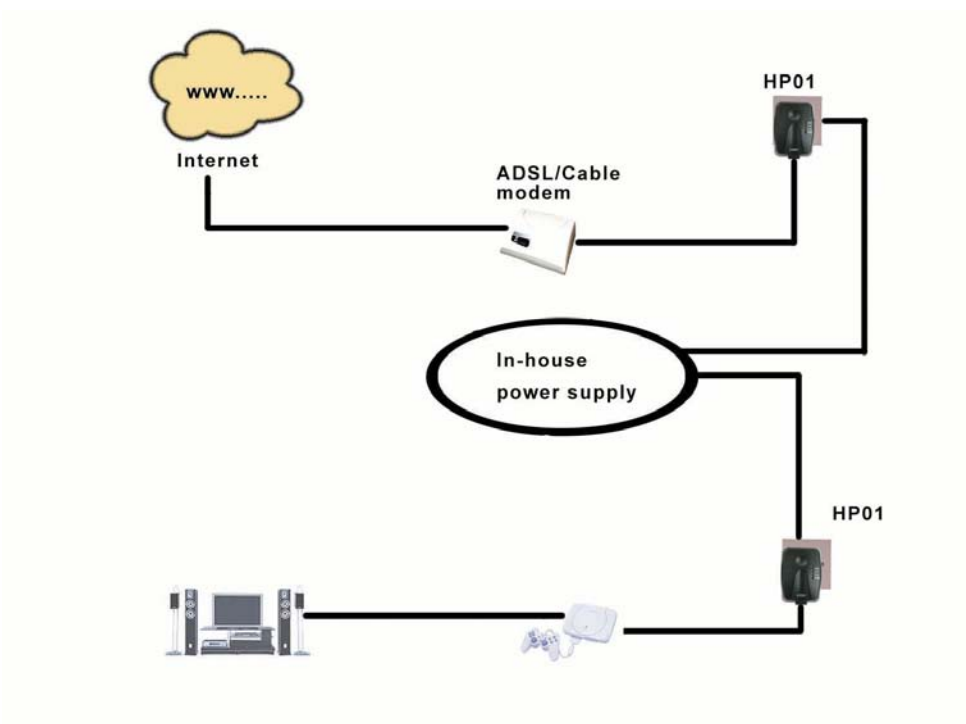
3.1.1 Home Networking-option 1

Workstation with Internet connection over an ADSL/Cable modem



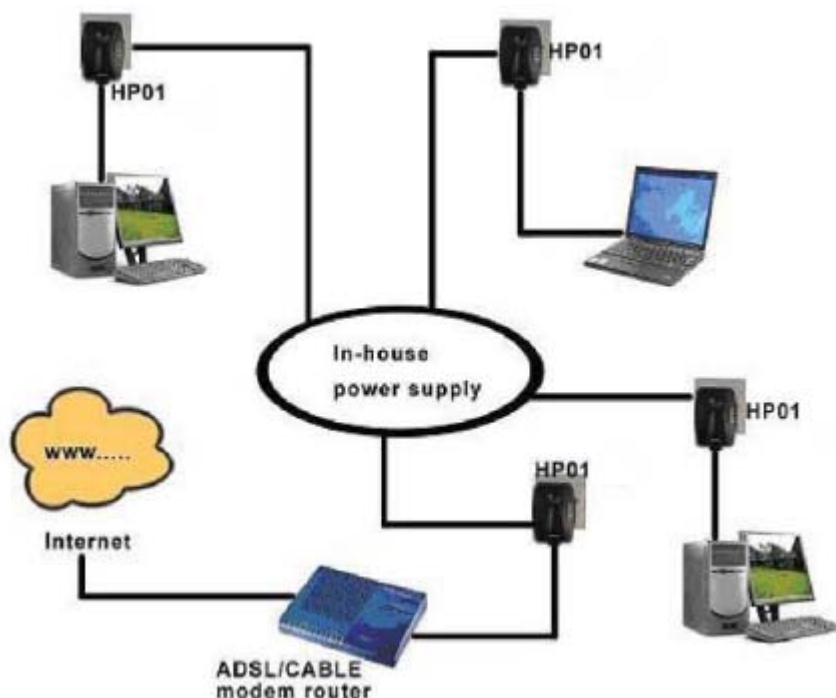
3.1.2 Home Networking—option2

Networking for Online Gaming.



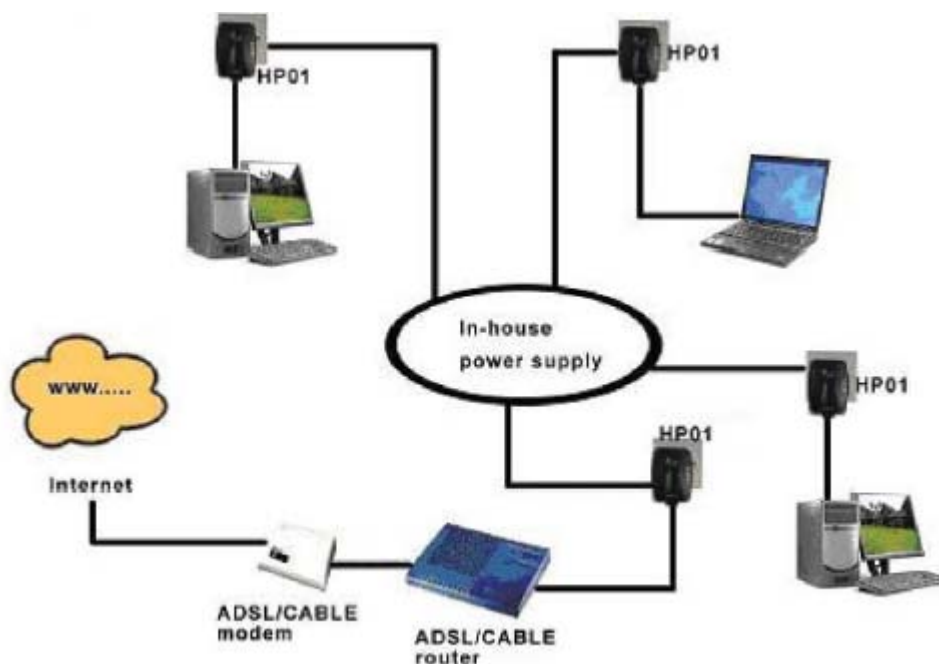
3.1.3 Home Networking—option 3

Networking for several workstations with one Internet connection over an ADSL/Cable modem router



3.1.4 Home Networking—option 4

Networking for several workstations with one Internet connection over an ADSL/Cable router and an ADSL/Cable modem



3.2 Care Instructions

Network Volume

The maximum number of HomePlug adaptors in a single-family house is theoretically 253 connections, but in practice more than 15 devices should be transferring data simultaneously.

Network Security

Normally the electric meter forms a physical barrier, i.e. only devices connected to this meter can be part of the network and benefit from the phase coupling . We strongly recommend that you use the HP01 HomePlug Ethernet Adaptor internal device encryption. It is configured with the HP01 HomePlug Ethernet Adaptor Configuration Utility.

4 PLCConfig Installation

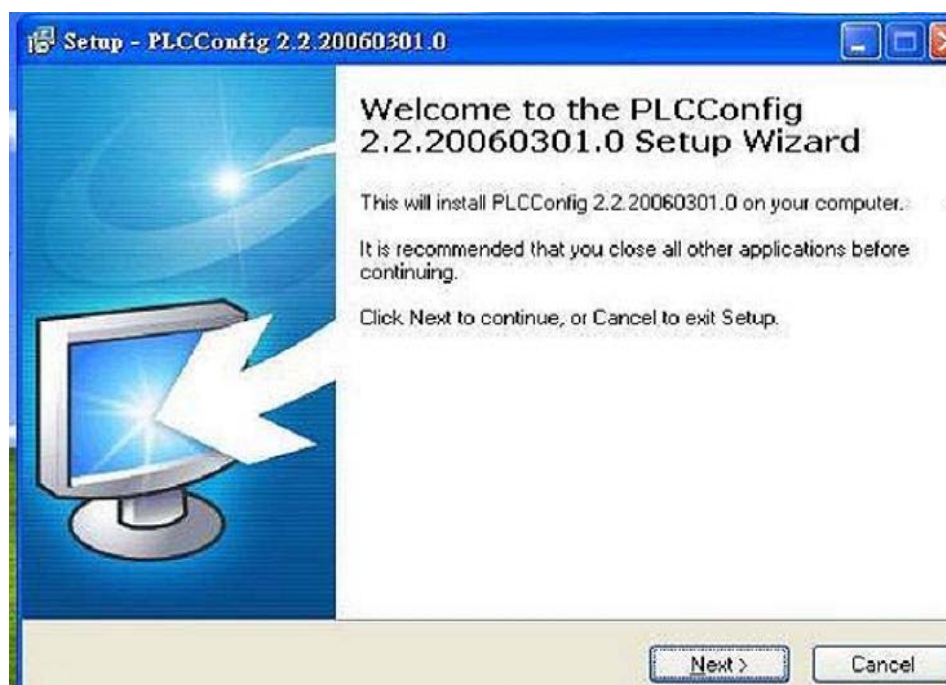
Overview

The installation of the Turbo Powerline Ethernet Bridge will only take minutes .Laying long wires throughout the house is not necessary . The device is also plug-and-play , which means as soon as two Powerline devices are plugged into the power outlets under the same electrical circuit , both devices should start communicating . The traditional RJ-45 LAN cable is simply replaced by in-house electrical wire . No additional software utility and driver are needed for the device to become operational. However , the enclosed software utility allows advanced users to manipulate the device for different needs , for example , device discovery ,changing default settings , increasing security , management , etc . If you decide to install the enclosed software utility , just simply install the software CD included in the box and physically connect the devices into computers and power outlets .For further assistance , please refer to our Frequently Asked Questions section .

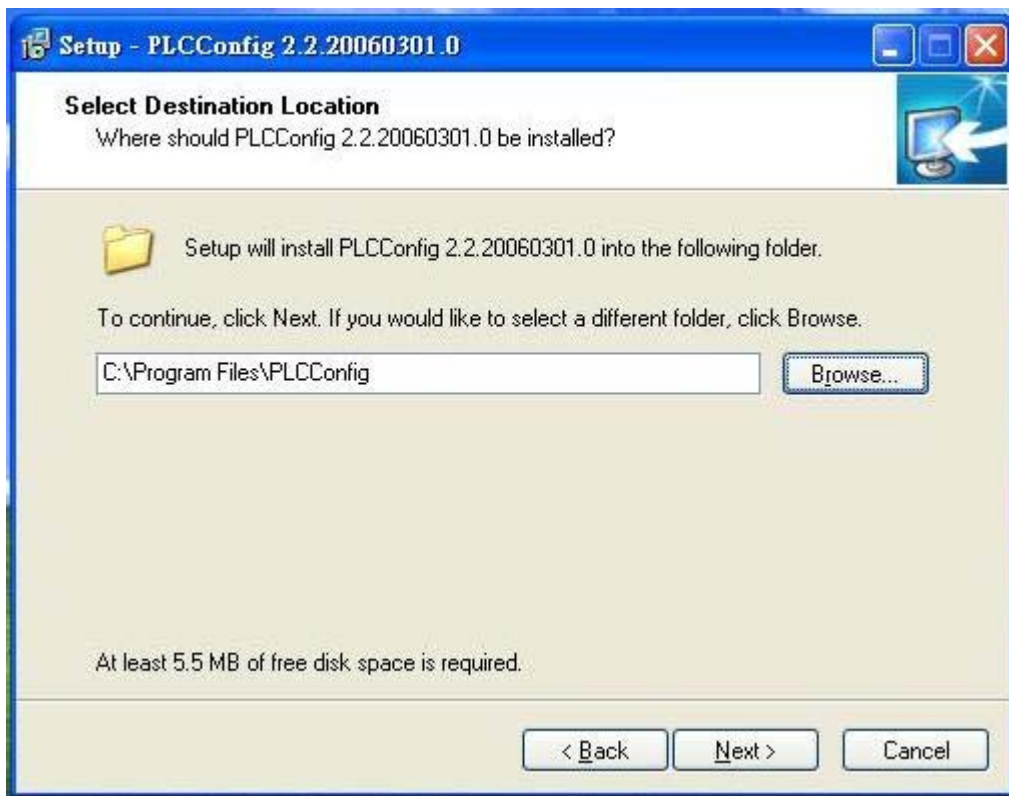
Running the Install Shield Wizard

Please insert the CD into your CD-ROM and wait a moment for the setup screen to come up . If the CD-ROM does not run the CD , please click on 'Start' at the bottom left of your screen (for most Microsoft Windows) and go to 'Run' .Type in : (CD Drive Letter) : \eth\setup . exe and click 'OK' .

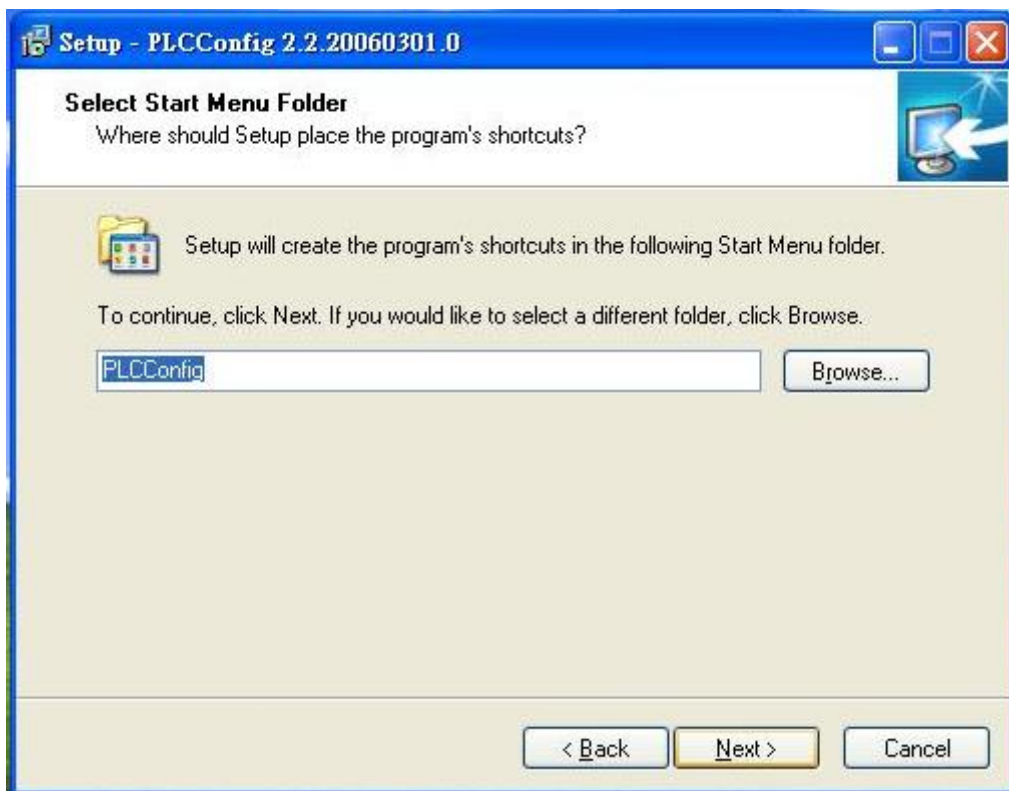
Once the software is loaded it will display a dialog such as :



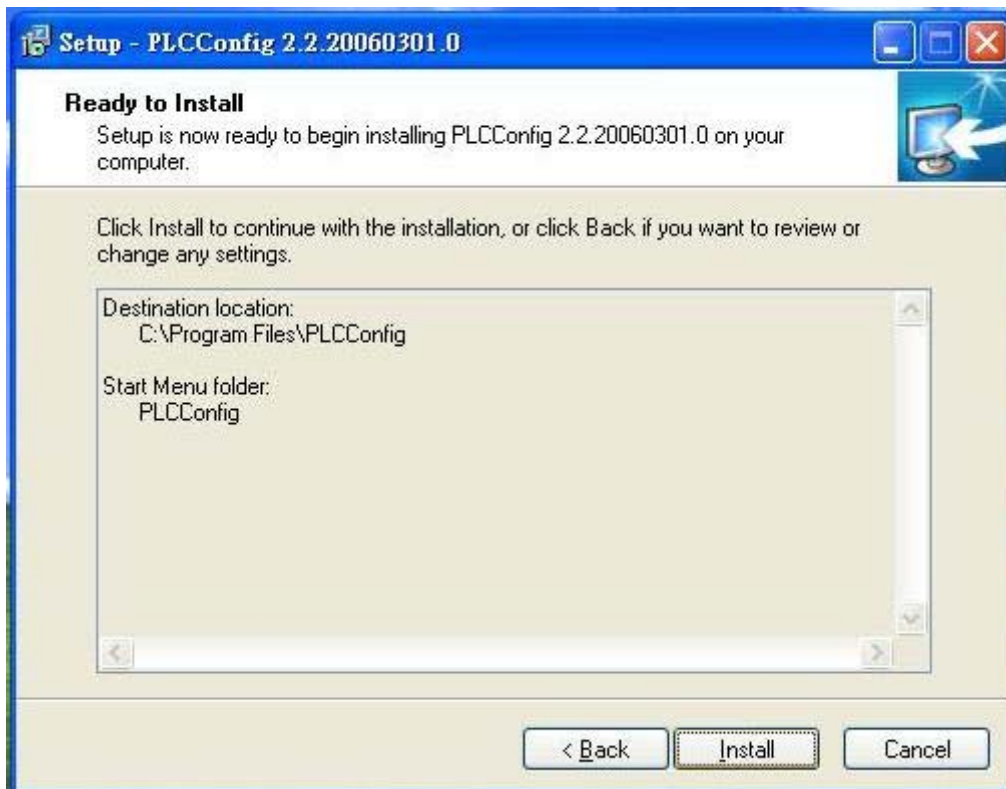
Please click on 'Next' to continue the installation .



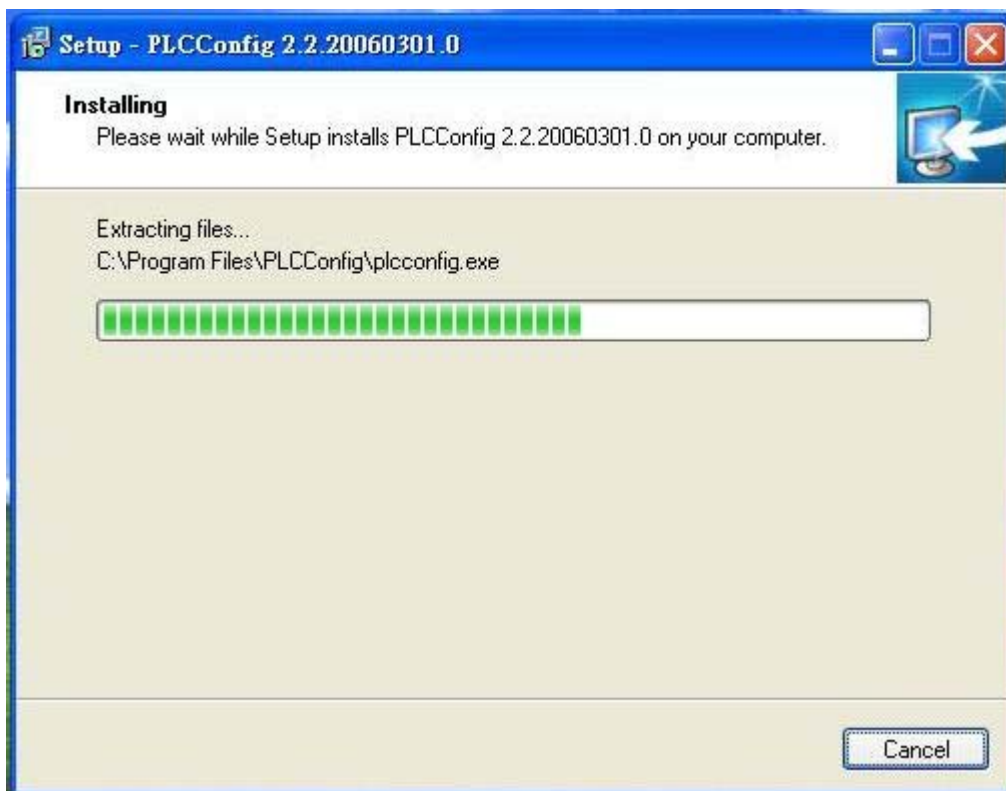
This section allows you to change the default directory where the program was installed. If you don't want to change the directory click on 'Next' to continue the installation process.



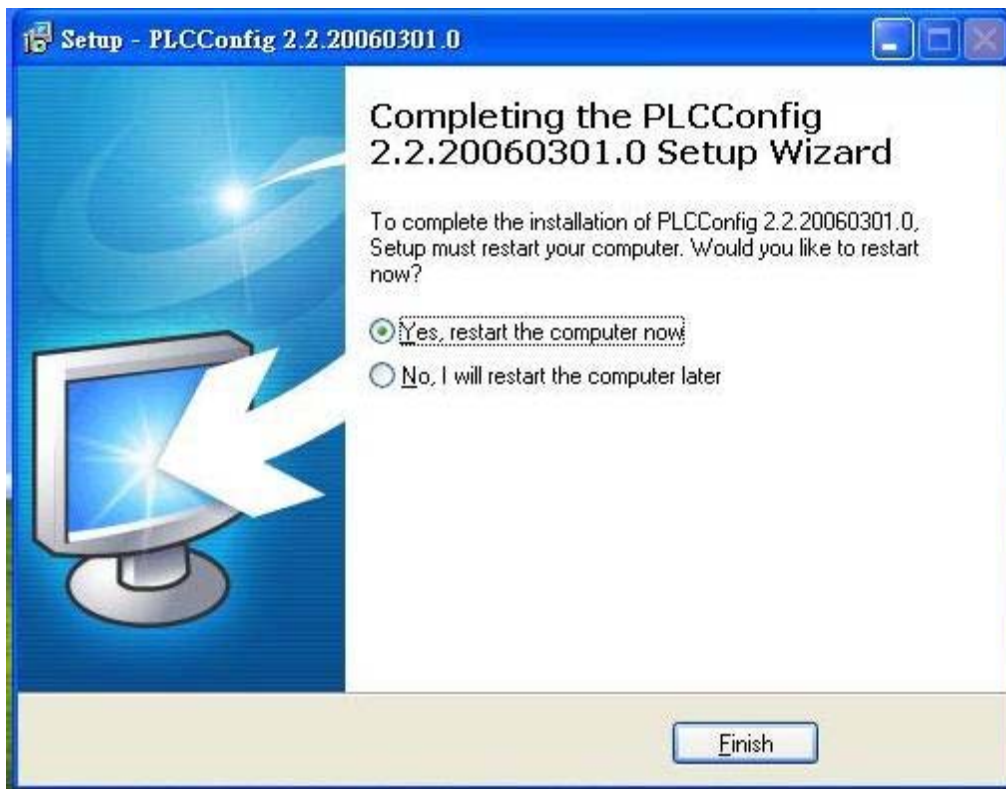
Setup will create the program's shortcuts in the following 'Start Menu folder'.
If you would like to select a different folder, click the 'Browse...' button. If not, continue and click the 'next' button.



This section allows a user to go 'Back' or 'Install' the utility. In case if the user wishes to change the previous options then go ahead and click on 'Back' to change the settings. If not, continue and click the 'Install' button.



This screen shows the progress of the installation .



This screen shows that the installation was completed successfully . Click on 'Finish 'to exit the wizard . Restart the computer or not .

5 Configuration

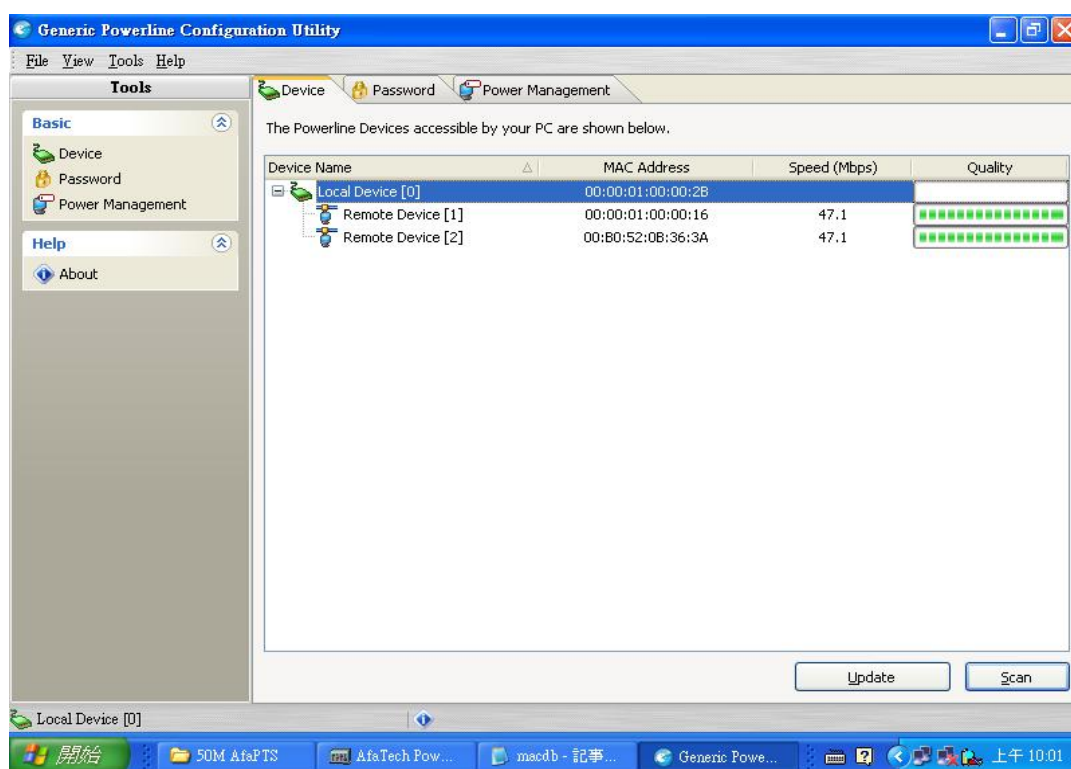
Overview

The Powerline device uses 56-bit DES encryption to block outside access .The key is set by using the software utility on the CD . By default ,the protection is enabled . However , it is recommended that you change the default network password . All your Powerline devices must use the same network password in order for the computers to be networked . Make sure that all devices are loaded with the same network password .

Diagnose Powerline network

5.1 Diagnose a Local Powerline Device

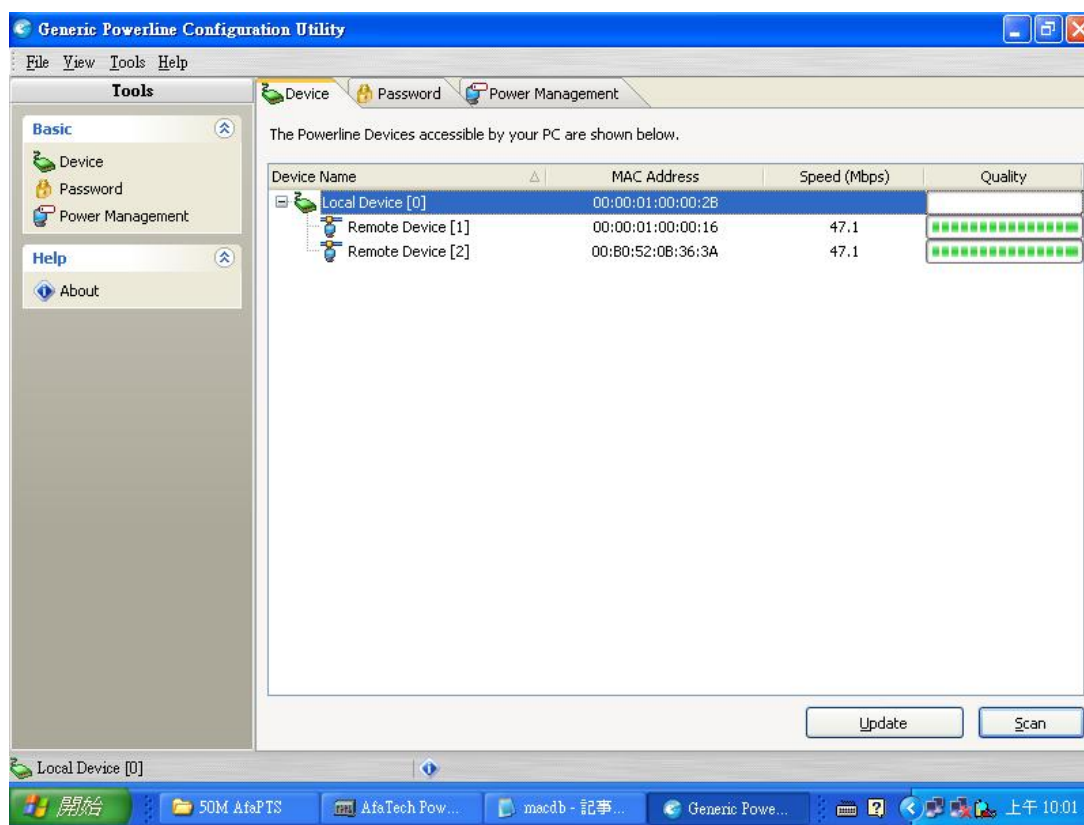
Double click the PLConfig icon on your desktop to open this utility show in the screen below



The Main tab shows the Powerline units that are connected to the current computer and other devices on the network . It will also tell Mac Address of each device . It will let you refresh the window , if you change devices , and also will allow you to connect to different networks if multiple units are connected to your computer .

Note If you do not see ANY unit in the device status , and there is a device connected to your computer ,try to unplug all devices , and plug them back in . Also make sure that the cable connecting your computer to the Powerline device is the right type and working correctly . If all of this seems to be correct , and you still receive nothing in the Device window , try rebooting your computer . If the problem still persists , please contact technical support .

5.2 Diagnose a Network Powerline Device



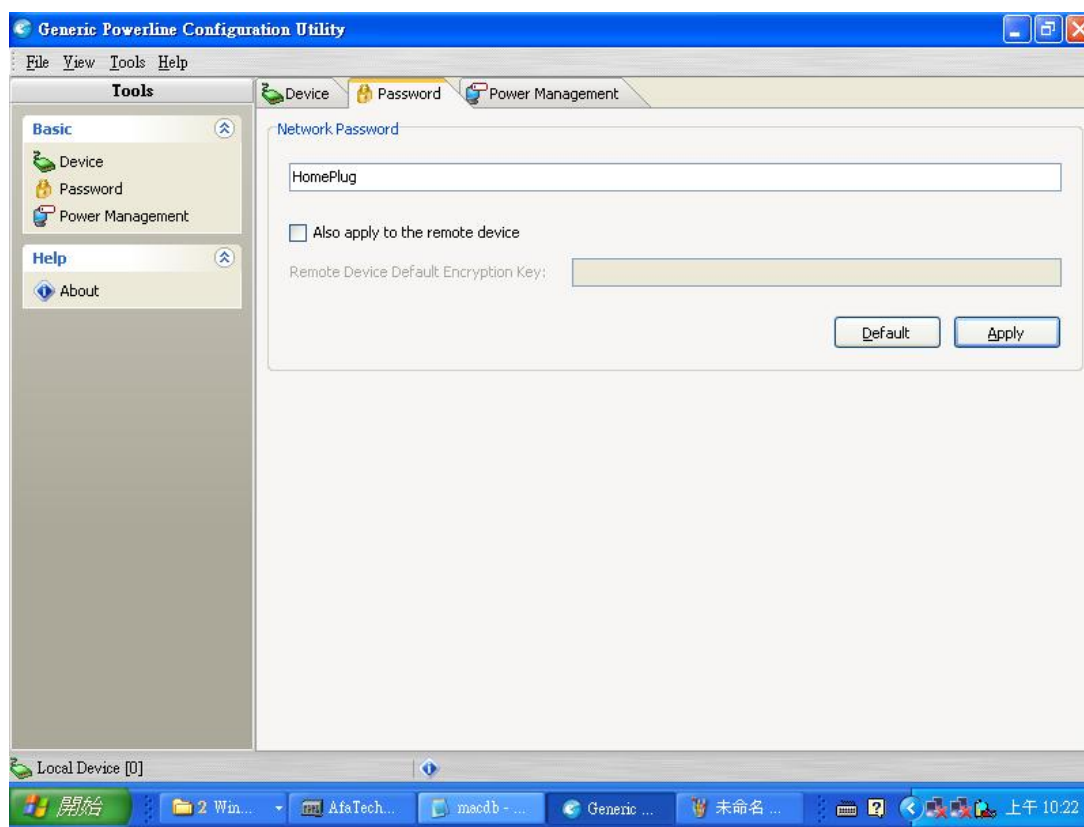
The Main tab shows all the other Powerline Units on your powerline network . It will represent them by MAC Address ,and will also show the available bandwidth to each unit (Units farther away from the current computer might have a lower Data Rate , since the distance is farther) .If you add or subtract units from your home network , you might want to re-Scan , by clicking the "Scan" button . This will rescan the network ,and refresh with any changes .

****Note**** Only units with the same Network Password will be shown , please check that first , to make sure they all have the same network password (Case sensitive) .

****Note****If a Unit shows MAC Address of all 0's , this unit might not have a solid connection ,or might not connect at all . If this is the case please contact technical support .

****Note**** If there are Units in your home , that you do not see in this Network scan , try to unplug all devices , and plug them back in (Only do this with the Units that you do not view in the network screen , you don't have to do this with all units . If the problem persists , try to move the unit closer to this current unit (adjacent plugs on the same wall socket is most preferable) . If the problem still persists and that unit is still not shown on the network , then the unit might be defective please contact technical support . Otherwise if you view the unit working , distance and / or electrical circuit might be the causes .

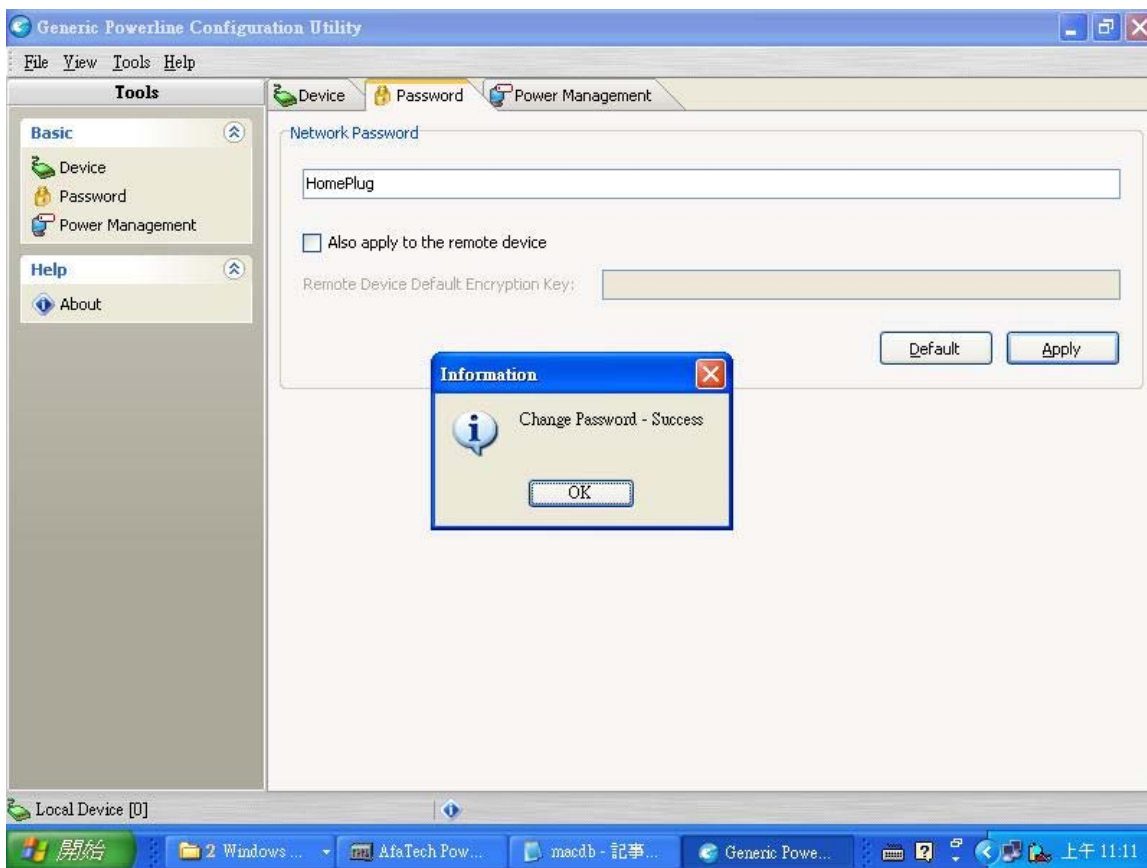
5.3 Setting Up Security on a Local Powerline Device



The Password tab will allow you to change the Network Password to the unit that is currently connected to this computer . Also it will allow you to change the network password to the remote HomePlug device that is scanned when you enter the device password of the remote HomePlug device to the remote device Default Encryption Key .This network password encrypts all data that is added to a 56-bit data encryption standard (DES) . The DES Encryption is very secure , and very difficult to crack . Therefore your home network is very secure and very difficult to be breached .

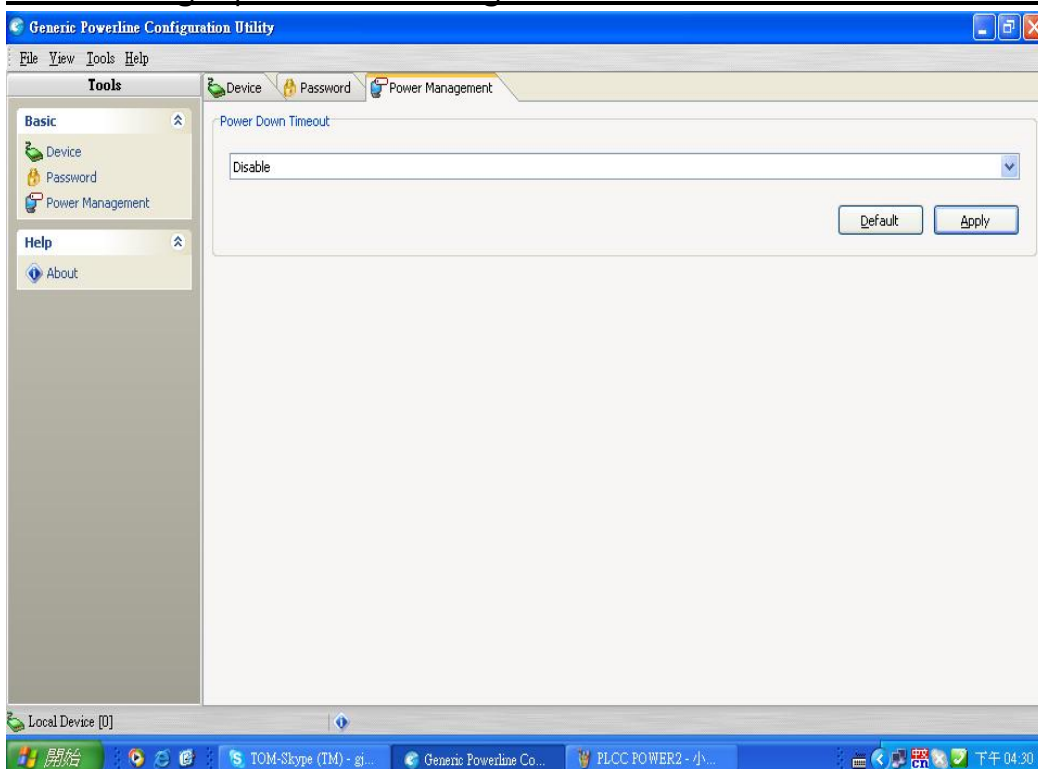
****Note**** Every unit on your home network **MUST** have the same Network Password for connectivity to be established throughout your home . The default network password is " HomePlug" .

You may input a new network password. Then click the 'Apply' button. It will display a dialog such as :

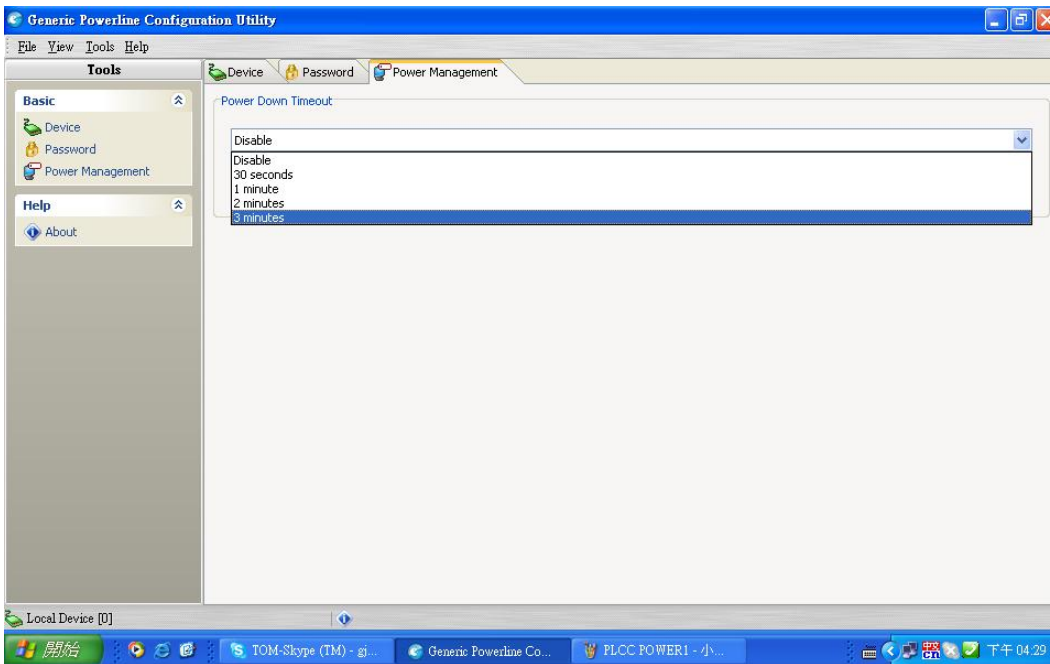


Click the 'OK' button, change network password successfully

5.4 Setting Up Power management on a Local Powerline Device



The power management tab will allow you to choose power down timeout. There are 5 statuses for you choose. It will display a dialog such as :



Click the 'Apply' button after choosing complete, powerline device will put into standby status.

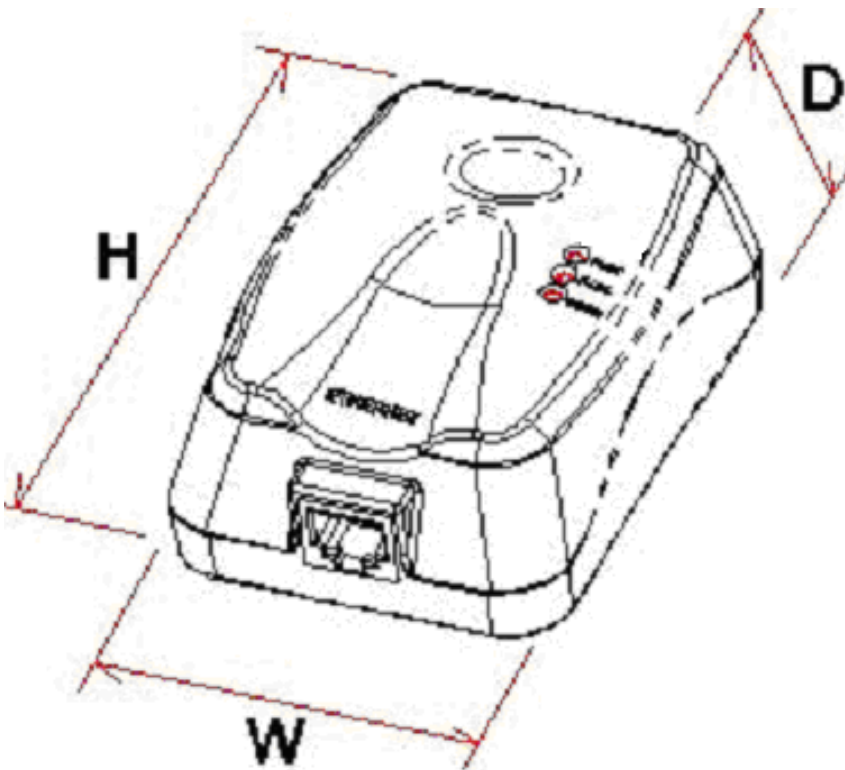


Figure 1

6 Technical Data

The table below shows the Technical Specifications of the HP01 HomePlug Ethernet Adaptor.

HP01 HomePlug Ethernet Adaptor	
Standards	100Base-T/10Base-T Ethernet, IEEE 802.3u 100Mbps/10Mbps Auto MDI/MDLx Support HomePlug 1.0 compatible
Protocols	CSMA/CA MAC control
Transfer rate	50Mbps(HP01-A1) or 85Mbps(HP01-A2)
Transfer procedure	Asynchronous
Modulation	16QAM,64QAM OFDM,DQPSK,DBPSK,ROBO Carrier Modulation Support
Frequency Band	4.3Mhz to 20.9Mhz band
Range	Up to 5000 square feet
Security	56 bit EDS
Platform Support	OS Independent with TCP/IP protocol installed and with Ethernet port.
LED Indicators	1×10/100Mb LED 1×Powerline Link Status LED 1×Ethernet Link/Activity Status LED
HomePlug connection	Standard power plug
Computer interface	RJ45
Current consumption	40mA
Power supply	Integrated 230V AC Supply via Power Socket for EU/UK/AU Model Integrated 120V AC Supply via Power Socket for US Model
Temperature	Storage:-25°C -70°C Operation: suitable for room temperature,27°C
Environment	Suitable for room temperature,27°C , 10-90% humidity(non-condensing)
System requirements(for Configuration Utility)	Ethernet interface Windows 98SE, Windows Me, Windows 2000, Windows XP
External Connectors	1×Electrical Power Socket 1×RJ45 for 10Base-T/100Base T Ethernet (AutoMDI/MDI-X)
Dimension	Plastic housing 96mm×68mm×34mm(H×W×D)(see figure 1)
Weight	Approx. 110g

7 Frequently Asked Questions

Q. What's the speed of Powerline operate over a standard home power line network ?

A. Powerline operates up to 50Mbps or 85 Mbps bandwidth over a standard home power line network .

Q. What's the Estimated Range of Powerline ?

A. Approximately 300 meters in wall power lines (one household) .

Q. Will Powerline signal pass through circuit breakers ?

A. Yes , Powerline signal work will have no problem passing though circuit breakers but not through power transformers .

Q. Does Powerline work with AC input 100 - 240 V ?

A. Yes , Powerline works with AC input 100 - 240 V .

Q. Does Powerline cause any interference with other my other home networking device ?

A. No , Powerline operated in a different frequency band than other power line control devices and can co-exist technologies as X - 10 , CEBus , and LONworks .

Q. Can my neighbor receive my Powerline signal ?

A. It is possible for your neighbor receive your Powerline signal between two adjacent homes . To prevent this happen , please enable the 56 – bit DES security encryption on your Powerline Device . To do that , you must run the Powerline Configuration Utility on each Powerline device in your power line network . This will only allow computers with the same security password to be able to receive information .

Q. How do I find out what's my current speed and my signal strength of my Powerline device ?

A. Run the PLCCConfig , it will show your current speed and your signal strength .

Q. One of the Powerline LED's doesn't light up after I plug the Powerline directly into a wall outlet ?

A. Test that wall outlet with other electric devices first , make sure that wall outlet is working properly . Then , try to plug your Powerline device again , if the same problem happens again , plug both Powerline units into adjacent sockets , and see if the lights light up . If you are still having problems please contact Technical Support .

Q. The Ethernet LED doesn't light up on my Turbo Powerline Ethernet Bridge ?

A. Most likely , if the Ethernet LED doesn't light on your Turbo Powerline Ethernet Bridge is because the Ethernet port on it doesn't a LAN connection .Check your Ethernet adapter on your computer , and make

sure its enable and working properly . Also , check your Ethernet cable , make sure you use the right type , it's plugged in correctly , and it's working properly .

Q. I can't connect to internet and other computers on my power line network ?

A. 1. Check your IP address and TCP/IP protocol are set up properly for all the computers on your power line network and try to ping your gateway .

2. See if Powerline Configuration Utility to detect all other Powerline device on your power line network . Try plugging both Powerline units into Adjacent sockets and see if the lights light up . If you are still having a problem , please contact Technical Support.

Q. How many Powerline devices do I need to setup a powerline network ?

A. You must need two or more Powerline devices to setup a powerline network .

Q. In order to making the Turbo Powerline Ethernet Bridge working properly , do I have to install the Powerline Configuration Utility on every single computer who has the Turbo Powerline Ethernet Bridge plug into it ?

A. No , the Powerline Configuration Utility is a utility to diagnose or setup encryption for Powerline device . Due to Turbo Powerline Ethernet Bridge is a fully plug & play device , no driver require to install . So technically speaking , the Powerline Configuration utility is not a requirement to install on your computer . In other words , you can install the utility , setup the encryption , and delete it from your computer , but your Turbo Powerline Ethernet Bridge will still working properly .

Q. How many Turbo Powerline Ethernet Bridges that I can install into one same Local Area Network ?

A. It recommended install up to **15** Turbo Powerline Ethernet Bridges in one same password powerline network .